



TIIG
INJURY SURVEILLANCE IN THE NORTH WEST OF ENGLAND

FAIRFIELD GENERAL HOSPITAL EMERGENCY DEPARTMENT

MONTHLY BULLETIN: OCTOBER 2013 TO SEPTEMBER 2014

This bulletin provides a breakdown of all injury attendances to Fairfield General Hospital Emergency Department (ED) between October 2013 and September 2014.

During this twelve month period there were 21,234 injury attendances to the ED. The month with the highest number of attendances, calculated as a daily average, was June 2014 (70 per day) with December 2013 having the lowest attendances (48 per day; **Figure 1**).

Males accounted for over half (53%) of all attendances (**Figure 1**). The highest proportions of attendances were for persons aged between five and 19 years (24%) and between 20 and 34 years (23%; **Figure 2**).

The majority (69%) of attendances were recorded as other injury (**Table 1**). Falls accounted for 17% of attendances while 5% of injuries were sustained by road traffic collisions (RTCs) and 4% were due to assault. Two-fifths (40%) of RTC attendees and 42% of DSH attendees were aged between 20 and 34 years (**Figure 3**).

Table 2 shows the incident location of injury attendances. Over two-fifths (43%) occurred in the home, 14% occurred in a public place, 7% at work and 5% at an educational establishment.

Table 3 shows the ethnicity of injury attendees to Fairfield General Hospital ED. Close to nine in ten (87%) were White and 6% were Pakistani.

The disposal of a patient can give an indication of the severity of the injuries sustained. The majority (59%) of attendees were discharged with no follow-up treatment required, a third (33%) were referred for further treatment and 7% were admitted to hospital (**Table 4**). Just over seven in ten (71%) RTC attendees were discharged, 19% of fall attendees were admitted to hospital and just over half (51%) of burns and scalds attendees were referred for further treatment (**Table 5**).

Table 6 shows the arrival method of injury attendances at Fairfield General Hospital ED. Seven in ten (70%) arrived by private transport while 17% arrived by ambulance.

Assault attendances

Between October 2013 and September 2014 there were 829 assault-related injury attendances to Fairfield General Hospital ED.

Almost seven in ten (68%) assault attendees were male and 46% were aged between 20 and 34 years (**Table 7**). Approximately one third of assault attendees (35%) arrived at the ED by ambulance and just under two-fifths (38%) occurred in a public place.

Figure 1: ED injury attendances by gender and month, October 2013 to September 2014

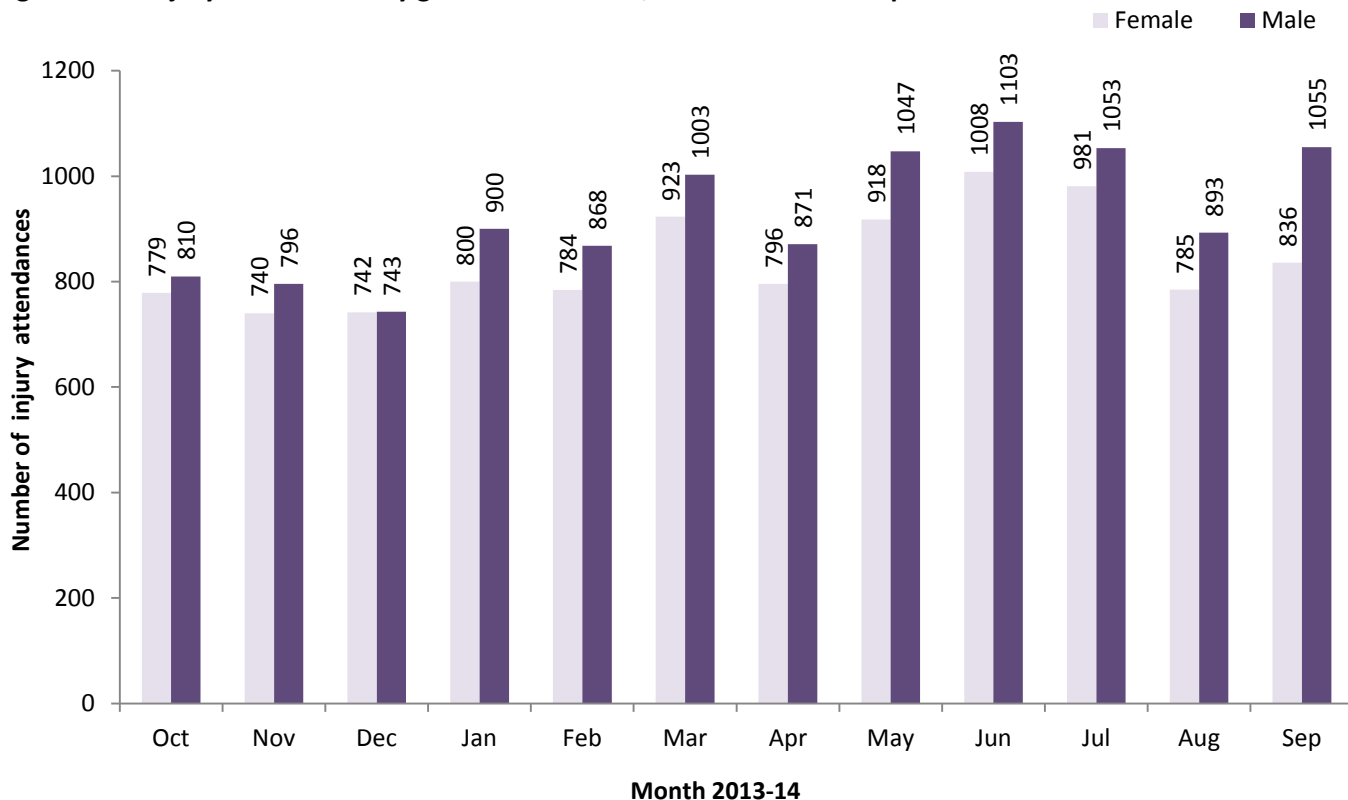
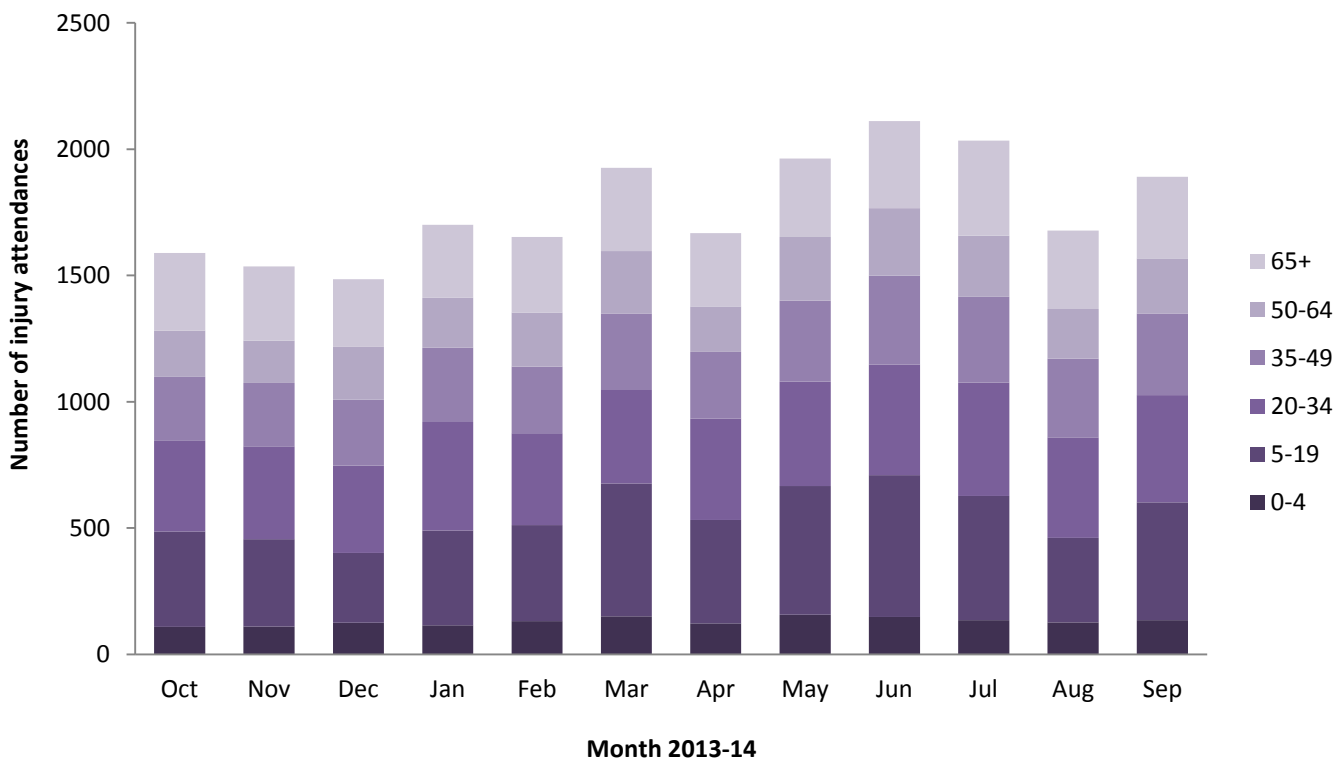


Figure 2: ED injury attendances by age group and month, October 2013 to September 2014[^]

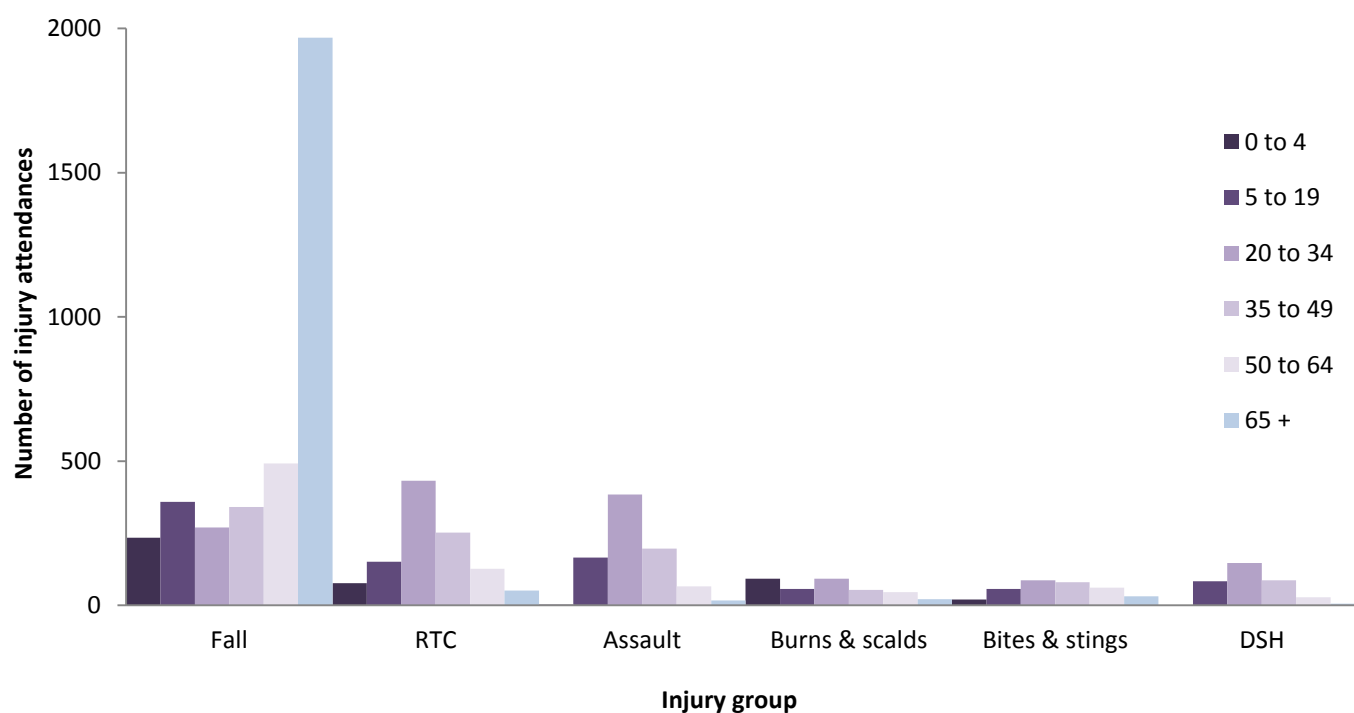


[^] There were <5 records where the age was unknown; these have been omitted from the chart.

Table 1: ED injury attendances by injury group and month, October 2013 to September 2014

Injury group	Oct	Nov	Dec	Jan	Feb	Mar	Apr	May	Jun	Jul	Aug	Sep	Total	%
Other injury	1022	926	902	1178	1139	1385	1175	1371	1554	1426	1161	1366	14605	69
Fall	330	336	307	295	300	315	282	319	298	339	267	277	3665	17
RTC	81	124	111	98	80	66	76	118	87	94	75	80	1090	5
Assault	75	78	67	65	70	71	61	76	84	66	75	41	829	4
Burns & scalds	34	24	34	21	23	38	19	37	20	35	34	41	360	2
Bites & stings	23	27	28	13	10	28	28	22	33	44	44	35	335	2
DSH	24	21	36	30	30	23	26	22	35	30	22	51	350	2
Total	1589	1536	1485	1700	1652	1926	1667	1965	2111	2034	1678	1891	21234	100

Figure 3: ED injury attendances by age group and injury group (excluding other injury), October 2013 to September 2014[†]



[†] There were <5 records where the age was unknown; these have been omitted from the chart.

Table 2: ED injury attendances by incident location and injury group, October 2013 to September 2014¹

Incident location	Assault		Bites & stings		Burns & scalds		DSH		Fall		RTC		Other injury		Total	
	n	%	n	%	n	%	n	%	n	%	n	%	n	%	n	%
Home	178	21	131	39	182	51	233	67	2008	55	15	1	6342	43	9089	43
Other	194	23	65	19	31	9	59	17	393	11	1048	96	3044	21	4834	23
Public place	319	38	69	21	16	4	33	9	681	19	13	1	1808	12	2939	14
Not recorded	23	3	36	11	76	21	<25	7	401	11	<15	1	1326	9	1897	9
Work	93	11	34	10	<50	14	0	0	84	2	***	0	1146	8	1408	7
Educational establishment	22	3	0	0	<10	2	***	1	98	3	0	0	939	6	1067	5
Total	829	100	335	100	360	100	350	100	3665	100	1090	100	14605	100	21234	100

¹ Please note that for all tables, all numbers less than five have been suppressed (with ***) in line with patient confidentiality. If there is only one number less than five in a category then two numbers have been suppressed to prevent back calculations from totals.

Table 3: ED injury attendances by ethnicity and month, October 2013 to September 2014^{1,2}

Ethnicity	Oct	Nov	Dec	Jan	Feb	Mar	Apr	May	Jun	Jul	Aug	Sep	Total	%
White	1412	1309	1275	1488	1447	1686	1455	1698	1849	1830	1439	1661	18549	87
Pakistani	92	95	103	84	93	90	99	142	105	86	93	101	1183	6
Not known	24	53	49	45	43	56	46	42	59	36	61	45	559	3
Any other ethnic group	23	30	15	33	28	34	28	37	33	30	24	34	349	2
Any other Asian	10	13	15	11	9	10	7	13	16	13	17	11	145	1
Black	13	16	12	13	8	12	11	7	24	15	16	20	167	1
Mixed	9	9	11	18	13	20	10	13	16	17	18	15	169	1
Bangladeshi	***	***	***	***	***	***	5	***	***	***	<10	***	41	0
Indian	***	6	***	***	***	11	***	7	***	***	***	***	51	0
Chinese	***	***	***	***	***	***	***	***	***	***	0	0	21	0
Total	1589	1536	1485	1700	1652	1926	1667	1965	2111	2034	1678	1891	21234	100

Table 4: ED injury attendances by disposal method and month, October 2013 to September 2014³

Disposal method	Oct	Nov	Dec	Jan	Feb	Mar	Apr	May	Jun	Jul	Aug	Sep	Total	%
Discharged	1065	1025	857	968	941	1134	1019	1066	1131	1174	1004	1106	12490	59
Referral/follow-up	399	369	487	585	573	649	493	761	823	708	536	612	6995	33
Admitted	106	124	106	125	122	130	131	122	130	132	122	149	1499	7
Other	19	18	35	22	16	13	24	16	27	20	16	24	250	1
Total	1589	1536	1485	1700	1652	1926	1667	1965	2111	2034	1678	1891	21234	100

Table 5: ED injury attendances by method of disposal and injury group (excluding other injury), October 2013 to September 2014³

Disposal method	Assault		Bites & stings		Burns & scalds		DSH		Fall		RTC		Total	
	n	%	n	%	n	%	n	%	n	%	n	%	n	%
Discharged	520	63	211	63	131	36	214	61	1859	51	779	71	3714	56
Referral/follow-up	209	25	114	34	184	51	41	12	1063	29	276	25	1887	28
Admitted	38	5	5	1	24	7	67	19	679	19	18	2	831	13
Other	62	7	5	1	21	6	28	8	64	2	17	2	197	3
Total	829	100	335	100	360	100	350	100	3665	100	1090	100	6629	100

Table 6: ED injury attendances by arrival mode and month, October 2013 to September 2014¹

Arrival mode	Oct	Nov	Dec	Jan	Feb	Mar	Apr	May	Jun	Jul	Aug	Sep	Total	%
Private transport	1053	1022	1007	1180	1138	1340	1175	1409	1521	1444	1149	1352	14790	70
Ambulance	308	313	298	299	318	335	311	287	324	330	288	296	3707	17
Not recorded	58	44	33	58	43	56	51	86	75	50	68	77	699	3
Taxi	73	70	51	57	53	88	61	74	77	84	74	76	838	4
Public transport	34	27	29	42	35	36	30	41	36	46	29	33	418	2
Foot	24	28	20	28	28	38	15	26	43	37	23	16	326	2
Police	16	15	23	19	16	20	13	22	23	23	25	18	233	1
Work transport	18	12	18	8	12	8	8	15	8	14	15	15	151	1
Other	***	***	***	<10	<10	<10	***	***	***	***	***	***	42	0
Unknown	***	***	***	***	***	***	***	***	***	***	***	<10	30	0
Total	1589	1536	1485	1700	1652	1926	1667	1965	2111	2034	1678	1891	21234	100

² White = Irish, British, other White background; Mixed = White and Black, White and Asian, mixed - any other; Black = African, Caribbean, other Black.

³ Admitted = admitted to hospital bed; Discharged = discharged - did not require any follow-up treatment; Referral/follow-up = discharged - follow-up treatment to be provided by GP, referred to ED clinic, referred to fracture clinic, referred to other out-patient clinic, transferred to other health care provider; Other = died in department, left department before being treated, left department having refused treatment.

ASSAULTS

Table 7: ED assault attendances by gender, arrival mode and age group, October 2013 to September 2014¹

	Assault attendances (n=829)		All injury attendances (n=21,234)
	n	%	%
Gender			
Male	561	68	53
Female	268	32	47
Arrival mode			
Other	540	65	83
Ambulance	289	35	17
Age group			
0 - 4	***	0	8
5 - 19	165	20	24
20 - 34	384	46	23
35 - 49	196	24	16
50 - 64	65	8	12
65 plus	<20	2	17

Published January 2015

Trauma and Injury Intelligence Group

Centre for Public Health, Faculty of Education, Health and Community, Liverpool John Moores University,
2nd Floor, Henry Cotton Building, Liverpool L3 2ET

T: 0151 231 4498 | E: tiig@ljmu.ac.uk | W: www.tiig.info and www.cph.org.uk | Twitter: [www.twitter.com/tiig_cph](https://twitter.com/tiig_cph)